

# MADIKWE

## PHOTOGRAPHIC SAFARI

A WILDLIFE PHOTOGRAPHIC SAFARI SET  
IN ONE OF SOUTH AFRICA'S BEST KEPT SECRETS

HOSTED BY TIMO BEKE & SAMUEL COX









# INTRODUCTION

With our photographic safaris, we at RAW Photographic insist on delivering nothing but the best experience possible for our guests. Not only do we want to ensure a fun, educational and meaningful wildlife experience - it's also important that we do so in a way that's driven by authenticity and ethics. A lot of research and effort goes into designing and building our products and we only partner with those who mirror our ambition in delivering great experiences whilst also remaining respectful to the land, wildlife and cultures we're visiting.

Whilst still working in some of Africa's most desired and premier hot-spots for wildlife, our aim is to keep our products as affordable as possible whilst not skimping on the value. All our trips are as inclusive as possible and are hosted by one of our professional photographers for bespoke photographic tuition and to ensure everything sails smoothly - making sure that you have nothing to worry about other than making sure your batteries are charged and memory cards are plenty!

We want nothing more than for our guests to feel confident and at ease with every moment of their experience with us - from the early stages of booking to the final airport goodbyes, so we implement an open door policy where we welcome and promote any and all questions, so please don't hesitate to get in touch with us regarding anything.



**Samuel Cox**  
Owner & Lead Photographic Host





# SUMMARY

**Safari Costs:**

Euro €4650.00 per person on shared basis (2x per room)

Single Supplement available with a surcharge of Euro €5950

**Start and End Dates:**

23 - 30 May 2025

**Safari Duration:**

Eight Days / Seven Nights

**Start and End Location:**

Johannesburg, South Africa

**Included Accommodation:**

One night in Johannesburg

Six nights in Madikwe Game Reserve

**Included Transport:**

O.R. Tambo airport pick-up and drop-off

Road transfers to and from Madikwe

# HIGHLIGHTS

Madikwe lies in a transition zone between the Kalahari thornveld and the Lowveld bushveld, where a unique array of wildlife share territory

Home to large array of animals including the Big Five plus cheetah, the African wild dog, aardwolf and brown hyena

Minimal restrictions for off-road traversing, meaning you won't miss out on getting close up sightings

24 / 7 access to an underground photographic hide overlooking one of the reserve's most popular waterholes

Over 300 species of birds have been recorded in Madikwe

Attentive guidance throughout from your private professional photographer, providing tuition in-the-field and back at the lodge

Pick-up and drop-off at international airport, meaning all domestic travel and logistics are organised so you don't have to worry about a thing!









# ABOUT MADIKWE

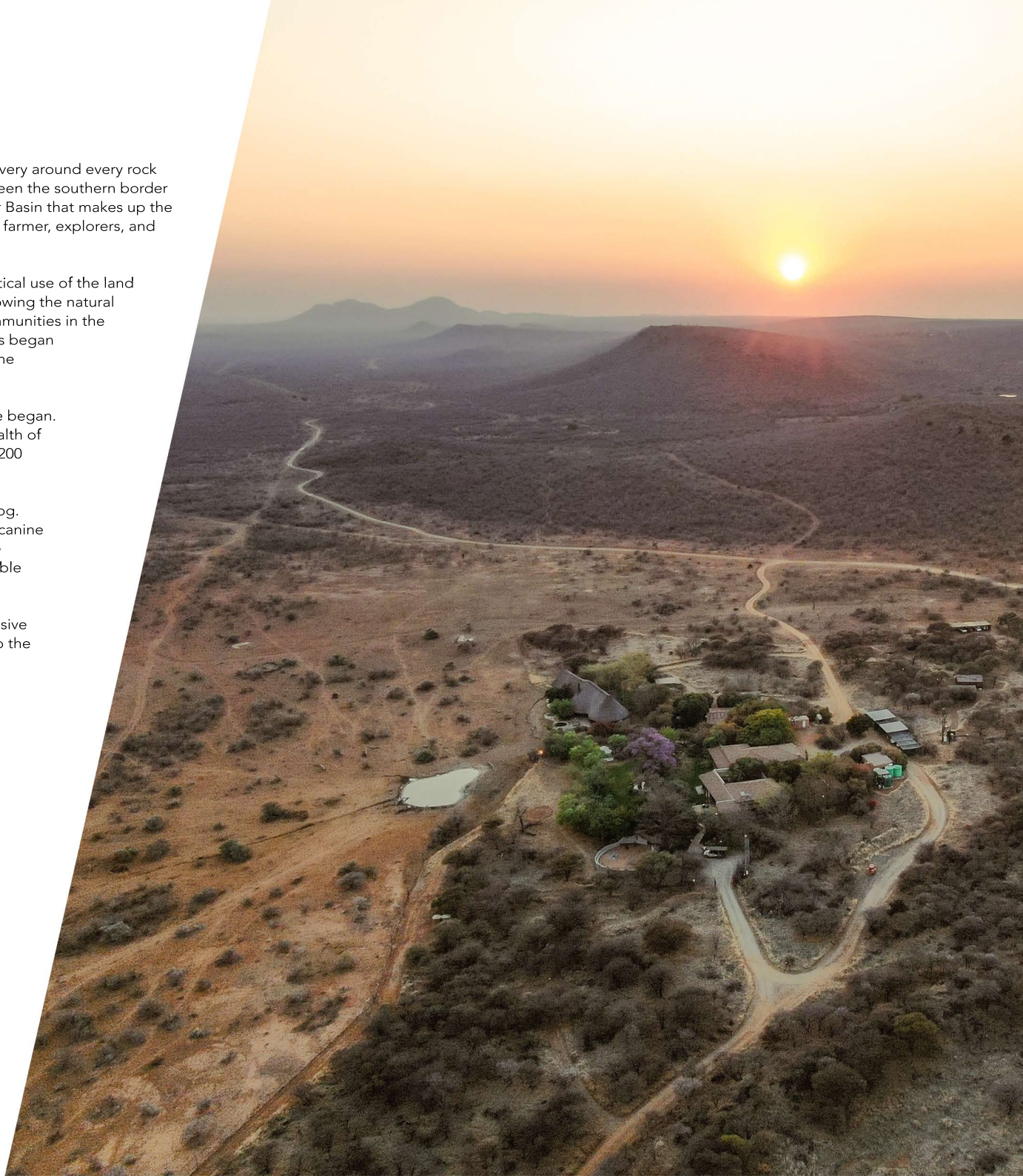
The Madikwe Reserve is saturated in history and maintains the feeling of new discovery around every rock outcrop, grassy hill, and Acacia tree. The majestic Madikwe reserve is nestled between the southern border of Botswana and the Molatedi Dam in South Africa. It is named for the Marico River Basin that makes up the area. Local people had called this area home for thousands of years. Later, hunters, farmer, explorers, and adventure seekers traversed this region in the early 1800's.

With other options available, it was decided by the government that the most practical use of the land that is now the Madikwe Reserve, be utilized for eco-tourism and conservation. Allowing the natural flora and fauna to take over again, the reserve became a positive upliftment of communities in the area. In 1991 it became an established reserve. Slowly, professional field researchers began reintroducing small herds of animals such as Cape Buffalo, Elephants, and Rhino. The reintroduction of predatorial animals was underway shortly after.

Once the perimeter fence had been completed in 1991, the reintroduction of game began. This relocation project was called Operation Phoenix. Coming together using a wealth of teamwork between private entities, the local communities, and the state roughly 8,200 animals were relocated here. This was the largest translocation project in history.

The Madikwe Reserve prides itself on the progress of the population of the Wild Dog. Due to human interference, rabies, and other diseases transmitted by its domestic canine cousin, these are one of South Africa's most endangered creatures. Researchers are maintaining studies of the Wild Dogs' positive progress so future generations are able to appreciate this amazing animal as well.

Now, the 75 000 hectares of land are considered home to the big five and other elusive species of animals. The Madikwe Reserve is a hidden gem, as it is not well known to the public. It is the fifth largest reserve in South Africa.





# PHOTOGRAPHY

Madikwe offers countless photographic opportunities and potential, especially for that of unique landscape opportunities with its dual ecotone habitat. Elephants, rhinos and buffalos in these landscapes offer excellent wide angle opportunities, whilst predators such as lions, cheetah and wild dog will keep you on your toes and snapping away to capture all the action.

Madikwe's red soil contrasts delightfully against the deep blue skies, giving you beautifully vibrant and truly unique wildlife photographs. Game drives are conducted throughout the year at optimum viewing times when game activity is generally at its peak, i.e. early morning and late afternoon into evening. The morning safari departs at sunrise, and the evening drive leaves late enough in the afternoon for guests to enjoy a bush sunset and the opportunity to view nocturnal animals after dark.

We will be utilising a private 4x4 landcruiser and field guide, meaning we have complete control and maximum flexibility to get the best photographs possible. Our photographic group will comprise a maximum of six guests, to ensure extra space and comfort whilst on game drive. A smaller group also means that more attentive and focused photographic guidance and tuition is possible. This includes in-the-field guidance and support, making sure you not only don't miss a beat, but also discover new creative skills and techniques to elevate your photography.

Back at the lodge between drives is the perfect time and location to look at photo cataloging and processing. Open up your laptop and we can look for ways to further improve and streamline your editing skills in Adobe Lightroom and Photoshop.... or alternatively we can go over photography basics such as creative composition, the exposure triangle and freezing the action depending on your needs and wants.

Your game drives will be conducted by one of the local field guides with plenty of experience and knowledge of the flora and fauna of the area. They will be the one sharing animal information to help build your knowledge and appreciation of everything you come across. This, plus photographic guidance, means you get the best of both worlds for an unparalleled photographic safari experience in one of South Africa's best game reserves.





# YOUR HOSTS

Samuel Cox has been a professional wildlife photographer for over a decade, photographing the flora and fauna of Zambia, Zimbabwe, Eswatini and South Africa - the last being a country he considers as a second home.

Over the years he's seen his photography and writing published across various platforms through the likes of National Geographic, BBC Wildlife Magazine, Travel Africa, Wildcard Magazine and Africa Geographic. However, it's in his ability to teach that he finds the most reward, and has had great success in seeing hundreds of photography guests develop their creative and technical skills under his mentoring.

Sam will be with you every step of the way to make sure that you're not only getting an abundance of photographic guidance, but to also ensure that the trip runs as smoothly as possible. He'll be providing in-the-field photographic guidance as well editing and photo tuition back at the lodge, making sure that you leave with a brand new portfolio of fantastic images.



Timo Beke got his passion for photography from his parents at an early age. Photography is not just a hobby for him, it is a passion that inspires and challenges him.

He has always loved nature, and wildlife photography is what he enjoys doing most. The idea of portraying nature and showing that every place has something special to offer gives him motivation and satisfaction.

The same quest for authenticity that he applies to wildlife photography, he also brings to other aspects of his work, such as documenting events, parties, travels, and more. Whether it's a wedding, a party or an adventurous trip, he strives to capture the real emotions and moments so that they are preserved forever in images.

Timo believe that real emotions and good photo's have the power to tell stories and create memories that will last a lifetime.







# ACCOMMODATION

In the spirit of oasis and sanctuary, The Last Word Madikwe is a completely unique lodge experience. Twice daily games drives to track the Big Five are an obvious favourite, but the true difference is to be found right at the lodge itself.

The house pours on to green and tranquil gardens which flow to the ancient waterhole just meters from the lawn's end. It is a place most of the animals visit daily and one can see large interactive herds of elephant, lions, leopard, buffalo, dogs, white and black rhino, and many more just by relaxing in a garden seat enjoying a drink or snack. Madikwe's original underground hide steals right up to the waterhole where aspiring photographers can catch the shot of a lifetime. Birdlife is abundant and although you will see many different species while out on game drive, many love to visit the inviting garden area and will often join you for breakfast. And it's malaria free.

All Classic Suites are contained in the house just meters from the public areas and are appointed in traditional African decor. All are en-suite and have separate showers and bathtubs. Each also has its own private patio, air conditioning, work desk and many luxurious amenities. Rooms average at 45m<sup>2</sup> or 484 square feet.

The restaurant offers a variety of dishes and guests can enjoy breakfast in the garden or dinner under the stars. There is also a bar and special diet menus can be arranged upon request. The chefs create a wonderful culinary selection, whether it is breakfast in the breezeway, afternoon tea (which is a light meal) in the garden or a fire lit dinner in the boma under the stars. Enjoy a bush style cocktail during the day or discuss the day's sightings sitting around our cosy pub after game drive. A pre-dinner drink could become a daily ritual!

The lodge public areas all look out onto the garden and the large waterhole so you can be assured that you will not miss out on any of the animal action.













# ITINERARY

## DAY 1:

The safari starts in Johannesburg where you will be met at arrivals in the O.R. Tambo international and get taken to a local Boutique Hotel. This will be the place where you will meet Sam and get to know everybody in your small group. Take the time to relax after your long flight and enjoy a dinner with new friends before getting a good night sleep.

*\* Dinner, breakfast and local drinks are included*

## DAY 2:

After a relaxed start to the day and a hearty breakfast, we will then start the journey to Madikwe. The drive is approximately four to five hours, and there will be a short break midway for a coffee / leg stretch. We aim to arrive in Madikwe just after noon. Upon arrival you'll be welcomed and have time to settle into the lodge before regrouping for high-tea and our first afternoon safari to get fully introduced to the magic of Madikwe.

We'll get back to lodge around 19:00 to enjoy drinks before dinner shared with quality conversation..

## DAY 3 - 7:

We'll head out around sunrise to take advantage of first light and the ensuing morning golden hour. Our focus will be on finding the best photographic subjects and wildlife experiences we can get; from looking for the large herds of elephants, occasional birding and of course, keeping on the lookout for predators. Having a private vehicle means the world is our oyster and we'll decide as a group what's the best focus for each game drive.

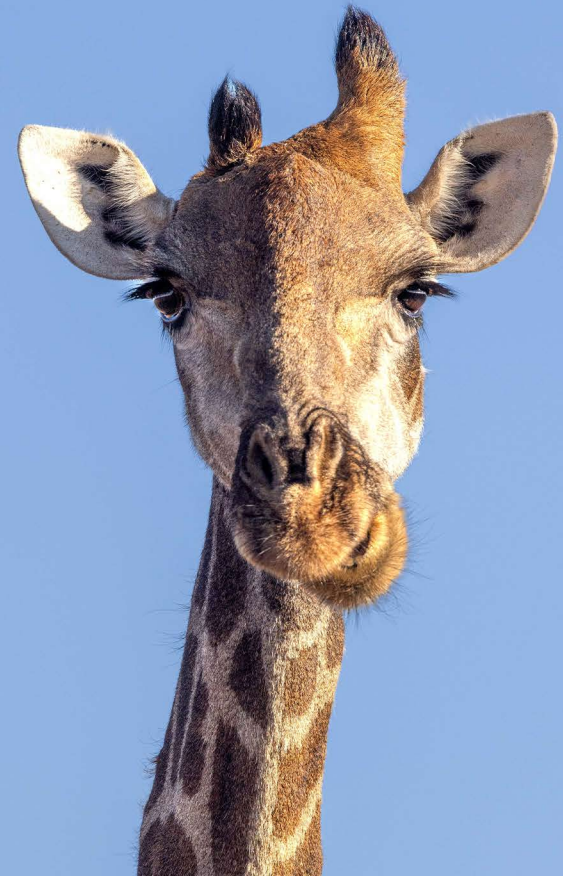
We'll get back to camp in the mid to late morning for a delicious breakfast and some time to relax. This is also the perfect time to work with Sam on your photography and editing skills. Alternatively, the rooms are luxurious and cool, the pool is inviting, there's a bar for drinks and don't forget about the hide!

Our second daily game drive will see us following up any sightings or information from previous drives - making sure that we stop at sunsets for the iconic sundowners experience. Dinner will follow as usual later in the evening upon return back to the lodge.

## DAY 8:

We'll head out for our final game drive and exploration of Madikwe before returning back for breakfast. We aim to head out at about 11am so as to arrive back O.R. Tambo airport for mid / late afternoon, so it's a good idea to pack the night before to save time and further enjoy your final hours at the lodge.

After arriving back at the airport, we'll say our "see you later"s and depart ways.





# PRICE

## Safari Costs:

Euro €4,650.00 per person on shared basis (2x per room)

Euro €5,950.00 per person single supplement

## Deposit Payments

A deposit of Euro €1,500 is required to secure your space on this safari, paid within 14 days of receiving the invoice. The remaining amount is to be paid no later than 10 weeks prior to departure

## Included In The Price:

- + Airport pickup at OR Tambo. Johannesburg
- + 1x night accommodation in Johannesburg including breakfast, dinner and local drinks
- + Return ground transfers from Johannesburg to Madikwe
- + 6x nights accommodation in Madikwe
- + All meals and local drinks in Madikwe
- + Twice daily game drives with private vehicle & guide
- + 24 / 7 access to underground photographic hide
- + Photographic tuition and guidance throughout
- + All conservation and park fees

## Excluded In The Price:

- Any accommodation or transfers not specified in the itinerary
- Additional meals and premier drinks in Johannesburg
- Tips and gratuities
- Travel Insurance
- Any items of a personal nature





# CONTACT AND BOOKING

To book your place on this photographic safari, or for additional information, simply get in touch with us via the e-mail address below and we'll get back to you as soon as we can.

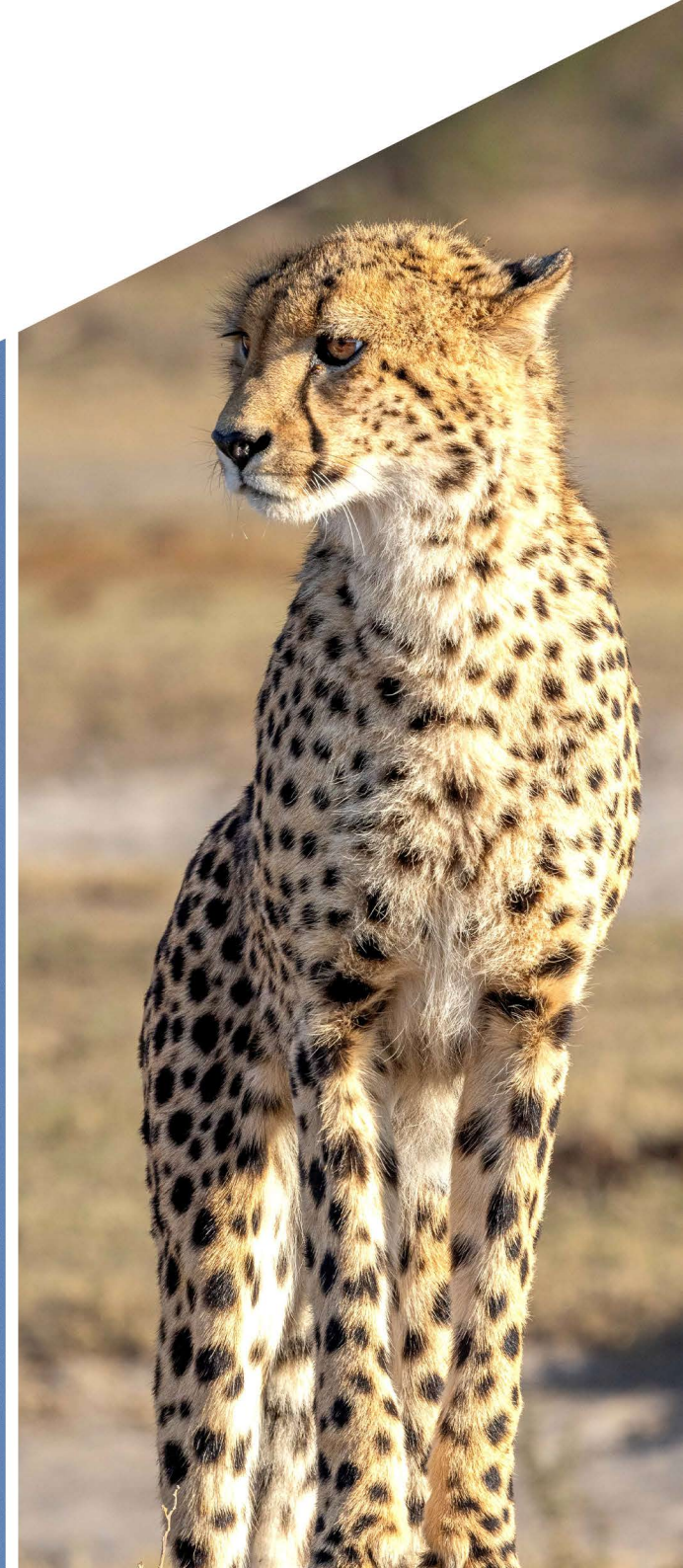
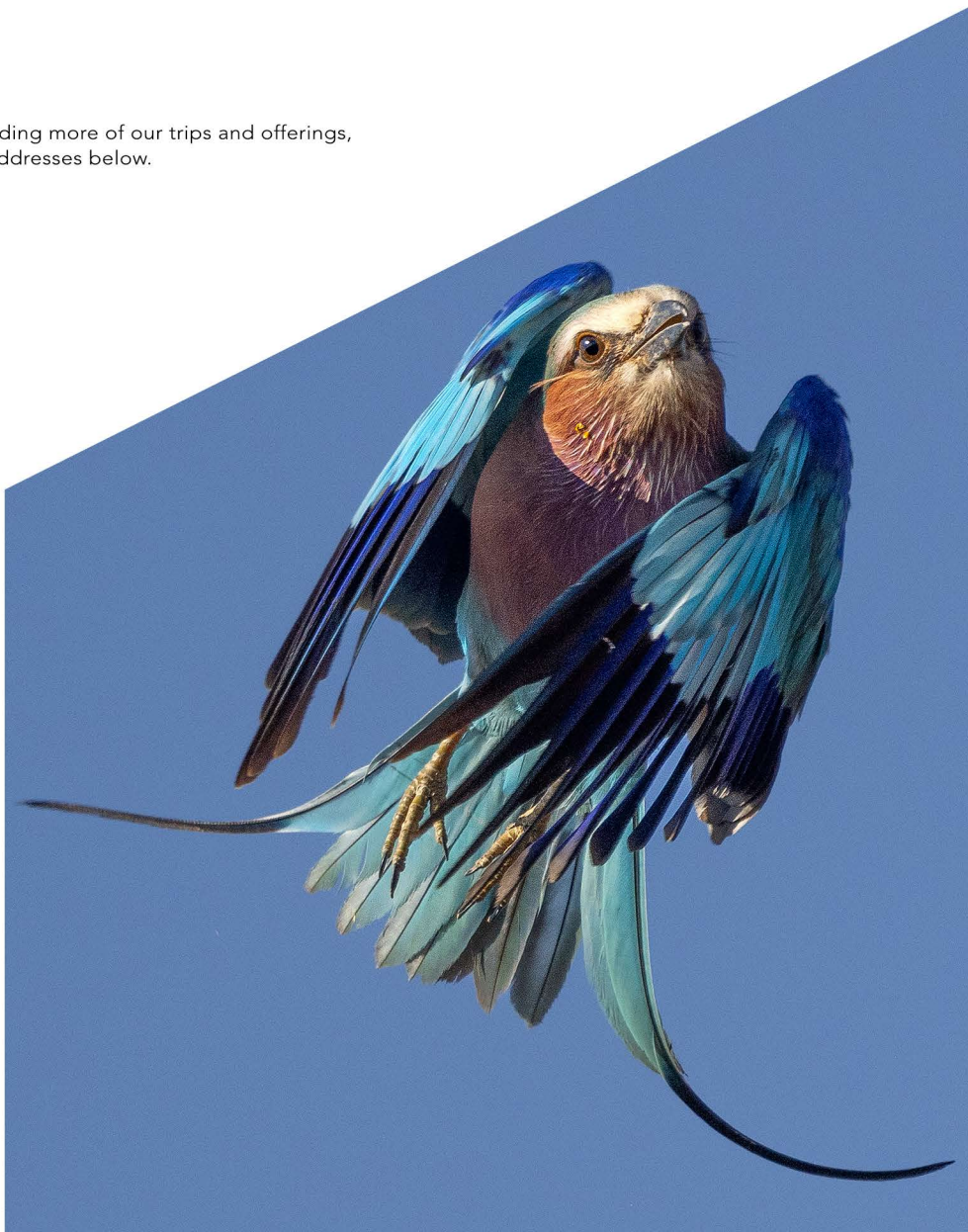
**E-Mail:**  
[info@raw-photographic.com](mailto:info@raw-photographic.com)

For more information on RAW Photographic, including more of our trips and offerings, please visit our website and social media via the addresses below.

**Website:**  
[www.raw-photographic.com](http://www.raw-photographic.com)

**Facebook:**  
[www.facebook.com/rawphotographicexperiences](http://www.facebook.com/rawphotographicexperiences)

**Instagram:**  
[www.instagram.com/raw.photographic](http://www.instagram.com/raw.photographic)









# TERMS AND CONDITIONS

1. The client who signifies his acceptance of a booking does so on behalf of himself and persons under his authority, which means that all are bound by the terms and conditions ('these terms') of RAW Photographic as if they had made the application themselves.

2. All estimates or quotations provided by, or bookings made with RAW Photographic are subject to these terms.

3. A non-refundable deposit of (specific to each trip) is required within 14 days of booking or by a date specified by RAW Photographic. This deposit is accepted as part of the inclusive fare and will only be refunded if the application cannot be accommodated by RAW Photographic unless due to circumstances related to COVID. Cancellation of booking, once deposit is paid, forfeits the deposit.

4. The full amount due by the client to RAW Photographic shall be payable no less than 10 weeks prior to the date of departure. If the full amount is not paid in due time, RAW Photographic reserves the right to treat the booking as cancelled. Bookings made within 10 weeks of the departure date must be paid in full immediately.

5. If a booking is cancelled by the client for any reason within 12 weeks of departure, RAW Photographic shall retain the full deposit and a cancellation fee will be payable equal to 100% of the total inclusive fare.

6. If the trip is cancelled by RAW Photographic due to COVID related reasons, the trip will be postponed to the same, or agreed time, the following year. No refunds will be given and the deciding time and date of any cancellation / postponing is at the discretion of RAW Photographic.

7. Should the client amend his/her booking at any stage, either in the form of a date change, itinerary amendment or any other change whatsoever, RAW Photographic reserves the right to charge an amendment fee per booking. Booking changes may be made only up to 12 weeks in advance of the booked trip.

8. RAW Photographic, who reserves the right to and shall be entitled to cancel any tour or product sold prior to departure, shall be obligated to refund all amounts received from the client, who shall have no further claim of any nature whatsoever against RAW Photographic arising out of such cancellations.

9. Should a client fail to join a tour, or fail to use the accommodation/services booked by RAW Photographic on their behalf, for any reason whatsoever, no refund or liability will be accepted by RAW Photographic.

10. RAW Photographic provides clients with travel and/or other services either itself or acting as agents for principals engaged in or associated with the travel industry. RAW Photographic represent such principles as agents only accordingly and accept no liability for loss, damage, injury or death which any client may suffer as a result of any act or omission on the part of or the failure of such principals to fulfil their obligations, whether in relation to travel arrangements, accommodation or otherwise. Any right of recourse the client may have, will be solely against the principal.

11. Cancellation, medical & repatriation insurance is compulsory for all RAW Photographic bookings, and it is the clients responsibility to arrange such insurance. It is strongly recommended that clients also take out insurance to cover emergency travel and accommodation, lost baggage and any other cover the clients deem fit.

12. The client acknowledges that the fare and itinerary specified, may be varied by RAW Photographic, without notice to the client, at the discretion of RAW Photographic and provided the itinerary and price is not substantially different from the itinerary that the client anticipated enjoying, the client shall not be entitled to cancel the contract. Fare increases may occur, due to any increase in fuel costs, game reserve fees, or fluctuation of exchange rates. Should the group number fall below the minimum number required for the booking, RAW Photographic reserves the right to re-cost the fare and raise a surcharge. Should any clients refuse to accept and pay such surcharge, RAW Photographic reserves the right to cancel the tour and retain deposit.

If you are a single traveller, we will do our best to find a suitable person to share the room/tent, should you request it. If we are unable to find a suitable person, you will be placed in a single room and charged the single supplement fee. We will endeavour to place a participant seeking shared accommodation with another compatible, participant requiring the same. Prior to allocating shared accommodation to participants not known to each other, subject to their approval, we will introduce the participants to each other, to check if both are happy to share the room/tent. In the event they do not wish to share the room/tent and a compatible, participant is unavailable to share a room/tent; all participants occupying unshared rooms/tents on the tour will be required to pay the single supplement cost. Whilst we will, of course, make every effort to assist, we will not be responsible for securing compatible travelling companions for those seeking shared accommodation.

13. This photo safari is designed to be within the capabilities of average people in good health. Some of the time participants may be required to walk over uneven terrain or trails, stepping into and out of Land Cruiser type vehicles, occasionally hiking over short distances - while carrying an assortment of sometimes heavy camera equipment. If you have concerns about your own capabilities and/or fitness as it relates to this trip, please enquire with RAW Photographic before booking for a trip. By forwarding a signed Guest Form and paying the initial non-refundable deposit, you warrant that, to the best of your knowledge, you do not have any physical or other disability that would create a risk for you or other trip participants. RAW Photographic's agent's judgment will ultimately determine an individual's ability to embark upon the photo safari. Once a booking has been accepted, medical circumstances will not be considered as exceptions to the cancellation policy. RAW Photographic assumes no responsibility for medical care.

14. If you sustain an injury or become ill on the photo safari, RAW Photographic reserves the right to continue the photo safari for the benefit of other participants. RAW Photographic will make every effort to assist you while at the same time trying to minimize interruption to the photo safari. RAW Photographic reserve the absolute discretion, in the event of behaviour detrimental to other persons, to decline any person's participation at any time during the photo safari and cancel that person's participation in the photo safari, in which case any refund will be forfeit.

15. The client acknowledges that it is solely his/her responsibility to ensure that he/she is in possession of the necessary travel documents and vaccinations that may be required in respect of the proposed tour and itinerary as well as all health and other certificates that may be required from time to time. RAW Photographic will endeavour to assist the client but such assistance will be at RAW Photographic's discretion and the client acknowledges that in doing so, RAW Photographic is not assuming any obligation or liability and the client indemnifies RAW Photographic against any consequences of non-compliance.

16. RAW Photographic and/or its agents act only as agents for the participants in this photo safari, in regard to travel arrangements including, but not limited to, sightseeing, meals, lodging and transportation, whether by railroad, vehicle, motor coach, boat, ship or aircraft. To the fullest extent permitted by law, RAW Photographic and/or its agents, disclaim liability for injury, damage, loss, or delay which may be occasioned by reason of a defect in any vehicle or for any other reason whatsoever, or through the acts or default of any company or person engaged in conveying the participant or in carrying out the arrangements of the photo safari.

RAW Photographic and/or its agents accepts no responsibility for losses or additional expenses due to delay or other changes in air or other services, sickness, weather, strike, war, quarantine or other causes.

All such losses or expenses are borne by the participant, as the photo safari costs provide for arrangements only for the times and locations stated. Baggage, including photographic equipment is at the participant's risk entirely, and as an insurable risk. Reasonable care has been taken to compile the information in this and the other documents pertaining to this photo safari but circumstances change. For example, airline schedule changes, airline fuel charges, taxes and operational costs are subject to change. RAW Photographic and/or its agents are not responsible for changes that occur and reserve the right to change the date of the trip and / or the price up to the date of commencement of the photo safari. Changes in price may also include adjustments for adverse currency exchange fluctuations.

The right is reserved by RAW Photographic to (i) substitute hotels/lodges/tents/camps of similar category for those indicated and to make any changes in the itinerary or transport where deemed necessary or caused by changes in schedules or equipment substitution; (ii) cancel the photo safari prior to departure, in which case a refund of all payments received for the package will be given. (However, in such event RAW Photographic and/or its agents will not be, responsible for any other trip preparation expenses such as penalized or non-refundable air tickets, visa fees and medical related expenses); (iii) substitute photo safari leader(s) for the leader(s) originally specified, in which case the substitution is not a basis for participant cancellation or refund, and (iv) accept or refuse any person as a participant in the photo safari.

In the event that, at the sole discretion of RAW Photographic, it is necessary or advisable for the photo safari to be cancelled due to such events as outbreak of conflict, government intervention, or withdrawal of access/traffic rights, or in the event of insufficient numbers being available, the refund of all monies paid, pro rata if applicable after commencement, shall constitute a full and final settlement by RAW Photographic and their agents of any obligations to participants. The operation of the photo safari is at the sole discretion of RAW Photographic, having in mind the welfare of all participants and the safe and prudent operation of the itinerary and program.

The Guest Form must be completed by each participant no later than 12 weeks before departure. Participation will be declined in the absence of a completed form.

17. The client agrees that he/she will at all times comply with RAW Photographic in regard to his/her conduct.

18. When the client is travelling with persons under his/her authority, he/she warrants that he/she is authorized to bind every member to the terms of the contract.

19. Where RAW Photographic has its own guide leading the safari; even with other tour leaders, all authority for leading the trip will be held by the RAW Photographics guide. The RAW Photographic guide will always collaborate with the other tour leaders on the safari, but authority on the running of the safari, the behaviour of the other tour leaders and the management of the clients during transfers as well as game drives remains with the RAW Photographic guide.

20. These terms constitute the entire terms of the relationship between parties. There exists no other terms, conditions, warranties, representations, guarantees, promises, undertaking or inducements of any nature whatsoever regulating the relationship, and the client acknowledges that he/she has not relied on any matter or thing stated on behalf of RAW Photographic or otherwise that is not included herein.

21. Clients, who have special requests, must specify such requests to RAW Photographic during the booking process. Whilst RAW Photographic will always endeavour to accommodate such requests; it does not guarantee that it will always be possible.

22. No amendment, cancellation or waiver of any term or right referred to herein shall be valid or binding unless reduced to writing and signed by both the client and a duly authorized representative of RAW Photographic.

23. No refunds will be considered in any circumstances whatsoever, although RAW Photographic may, in its sole discretion, consider a refund in the event of death or serious illness of the client.

24. Payment received from clients in the form of a deposit and/or full payment for a service forms a binding agreement between the client and RAW Photographic for the agreed services and is bound by RAW Photographic's terms and conditions.

25. All image and intellectual rights of RAW Photographic employees and subcontractors are the property of those individuals. These rights will remain with the individual till perpetuity and cannot be impinged on. Sub-contractors working for RAW Photographic have the right to take photographs while working. RAW Photographic will not enter into discussion regarding image rights. Clients will not have the right to impinge on RAW Photographic employees from taking photographs.

26. Please be aware that all Credit Card and PayPal payments will attract a surcharge onto the invoice amount. Direct deposits and international transfers do not attract a surcharge and should land in our account for the exact invoiced amount.



